

Integrated Strand - Intercepts

Name: _____

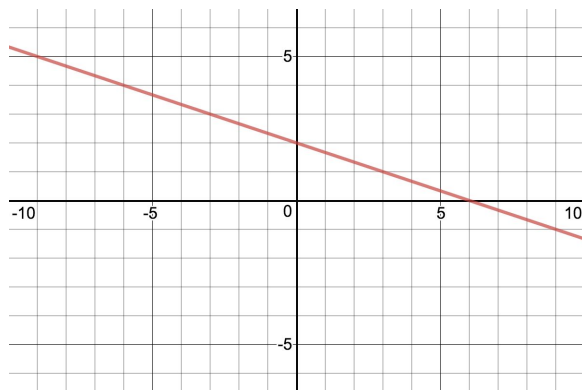
Date: _____

Period: _____

Find the x- and y-intercepts of the following functions:

$$y = \frac{2}{3}x - 4$$

$$5x + 2y = 20$$



Write the equation of the graph: _____

Share how you determined the intercepts for each:

1

Find the x- and y-intercepts of the following functions:

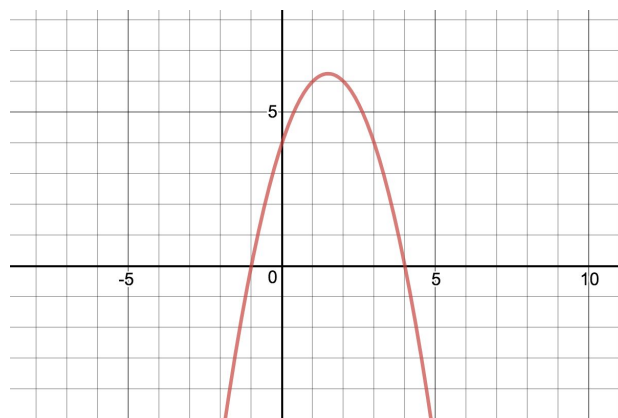
$$y = (x - 3)^2 - 9$$

Name: _____

Date: _____

Period: _____

$$f(x) = x^2 - 7x + 12$$



Share how you determined the intercepts for each:

Write the equation of the graph: _____

2