

# Integrated Strand - Intercepts

Name: \_\_\_\_\_

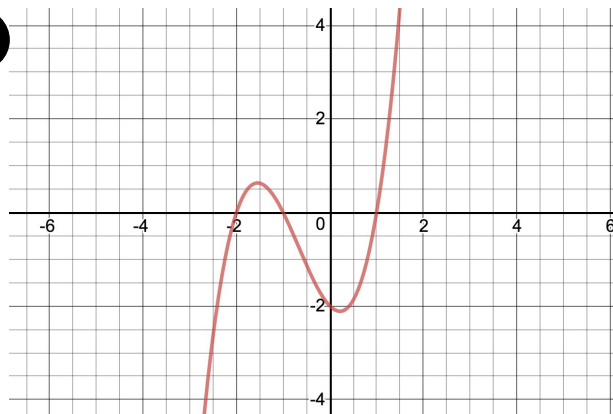
Date: \_\_\_\_\_

Period: \_\_\_\_\_

Find the x- and y-intercepts of the following functions:

1  $y = (x - 2)(x + 3)(x - 4)$

2



Write the equation of the graph: \_\_\_\_\_

3  $y = x^3 - 2x^2 - 5x + 6$

3

Based on your responses above, and *without graphing or factoring*, describe the characteristics of the following function:  $y = x^3 - 5x^2 + 2x + 8$

3